



Model Number: APS-827nm-260mW-STM-5.6mm-APC

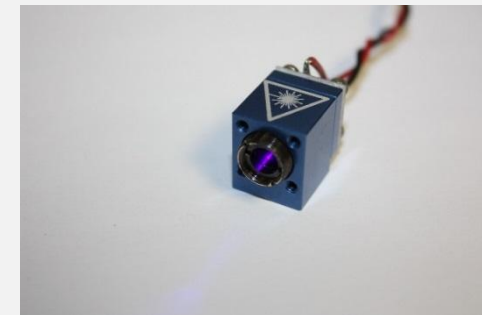
APS 260 mW 827 nm Laser Diode Module With Adjustable Aspheric Collimating Lens

Absolute Maximum Ratings at 25 °C

Item	Ratings	Unit
CW Output Power	260	mW
Laser Diode Reverse Voltage	2	V
Maximum Operating Current	350	mA
Operating Temperature	0 to 60	°C
Storage Temperature	-40 to 75	°C

- **Simple Integrated Package**
- **Excellent Diode Heatsinking**
- **Small Footprint**
- **Simple Connection With Two Power Leads**
- **Adjustable Collimating Lens**
- **Lightweight, Rugged**
- **Precision Machined**

**Applications: Pointing, Illumination,
Motion Sensing, Printing**



Advanced Photonics Sciences, LLC. Tel.: 570-553-1120

www.advancedphotonicsciences.com

info@advancedphotonicsciences.com



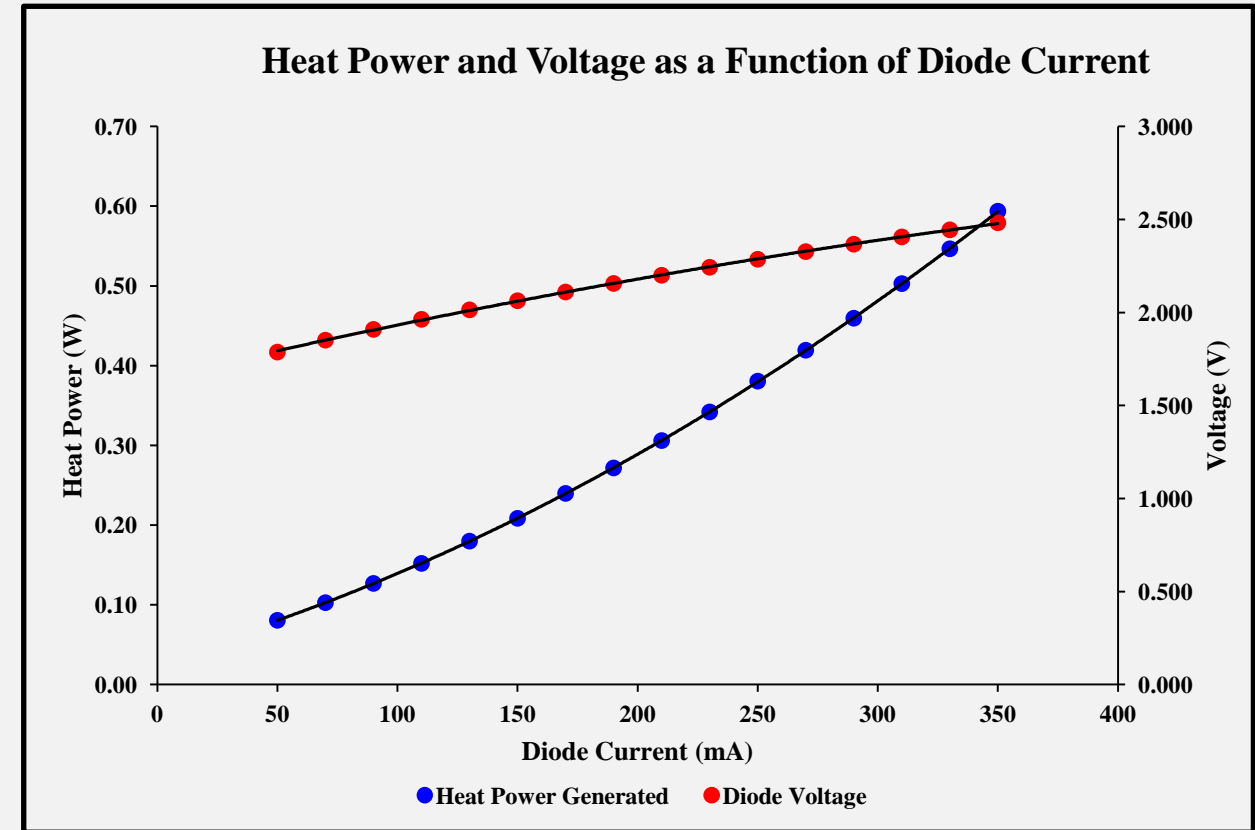
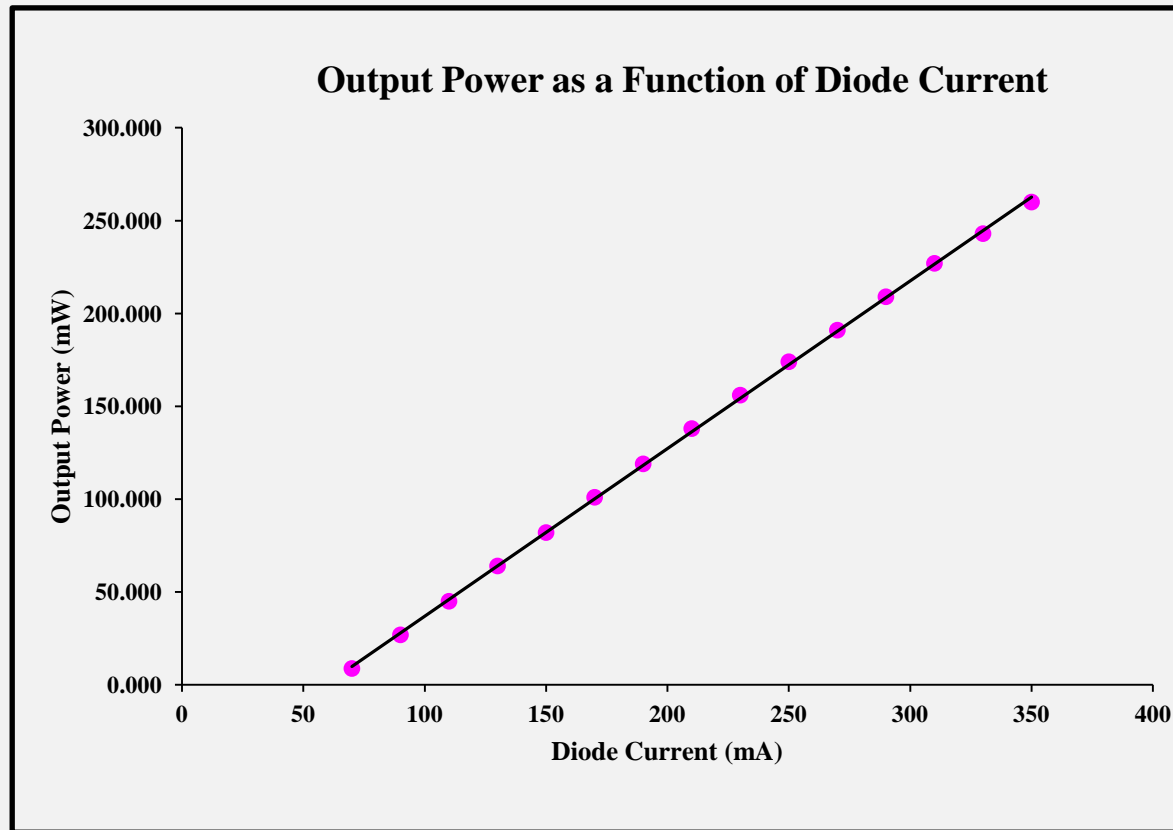
Model Number: APS-827nm-260mW-STM-5.6mm-APC

APS 260 mW 827 nm Laser Diode Module With Adjustable Aspheric Collimating Lens

Optical and Electrical Characteristics at 25 °C

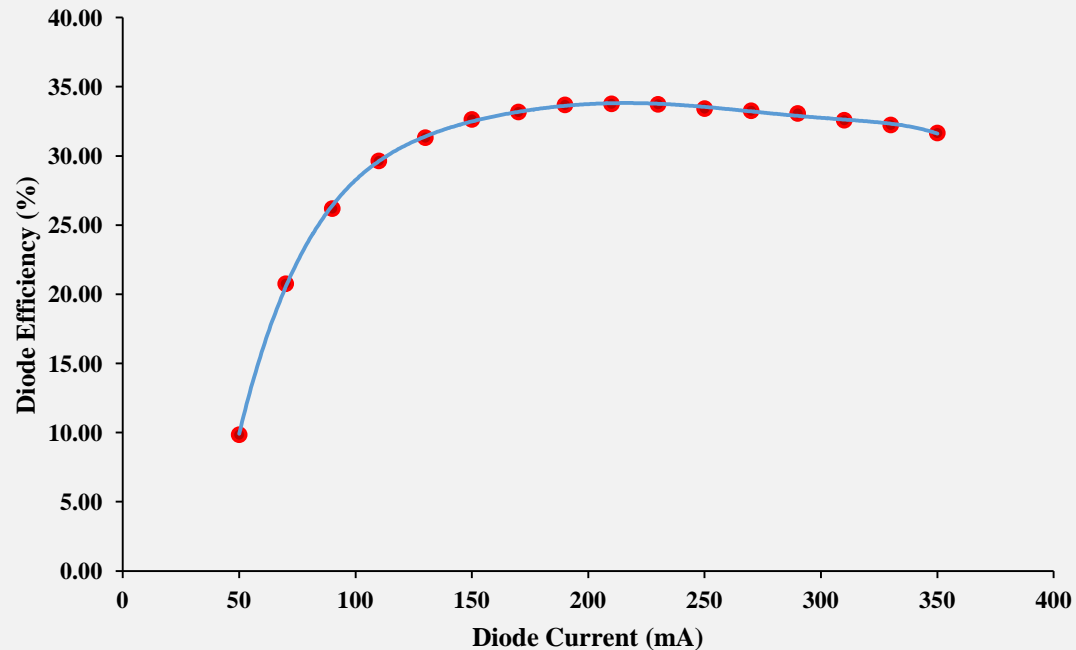
Parameter	Min	Typical	Max	Units	Test Condition
Threshold Current	35	45	60	mA	-
Operating Current	250	300	350	mA	$P_o = 260 \text{ mW}$
Operating Voltage	2.1	2.5	2.9	V	$P_o = 260 \text{ mW}$
Fast Axis Beam Divergence	22	29	36	°	$P_o = 260 \text{ mW}$ 1/e ² Full Angle
Slow Axis Beam Divergence	11	15	20	°	$P_o = 260 \text{ mW}$ 1/e ² Full Angle
Lasing Wavelength	820	827	840	nm	$P_o = 260 \text{ mW}$
Transverse Mode	STM	STM	STM	-	All Currents
Polarization TE	-	-	-	-	Horizontal

Module Experimental Data

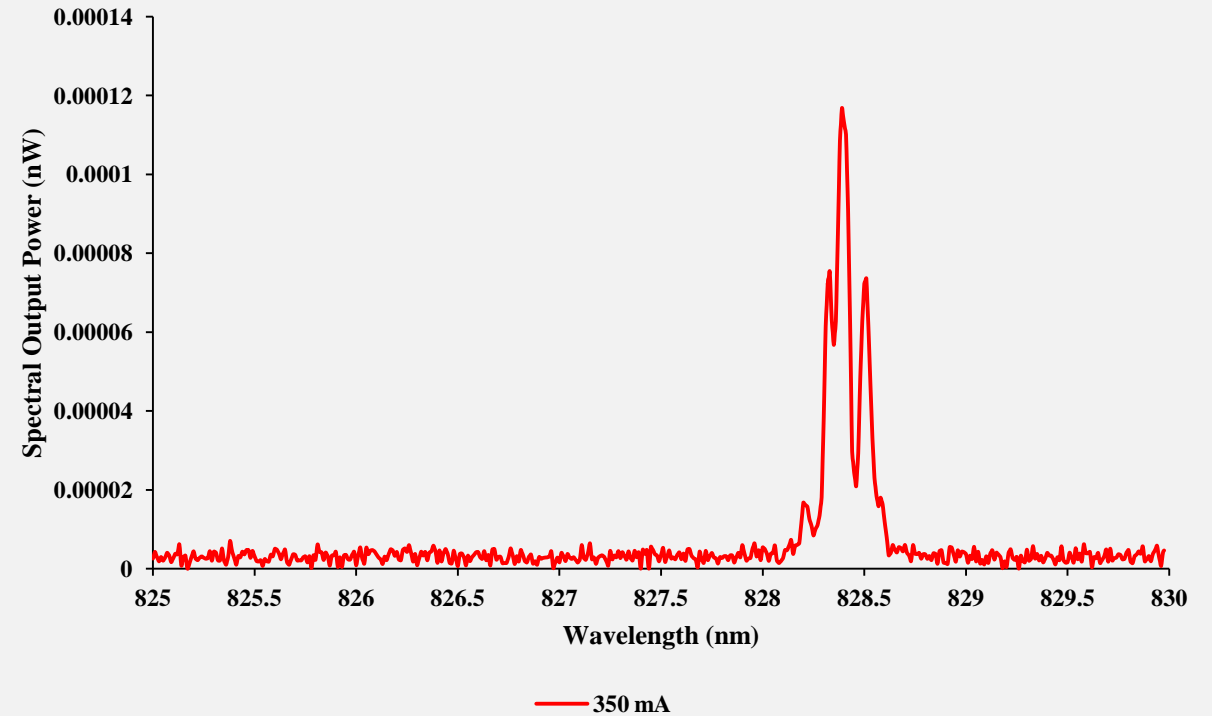


Module Experimental Data

Wallplug Efficiency as a Function of Diode Current

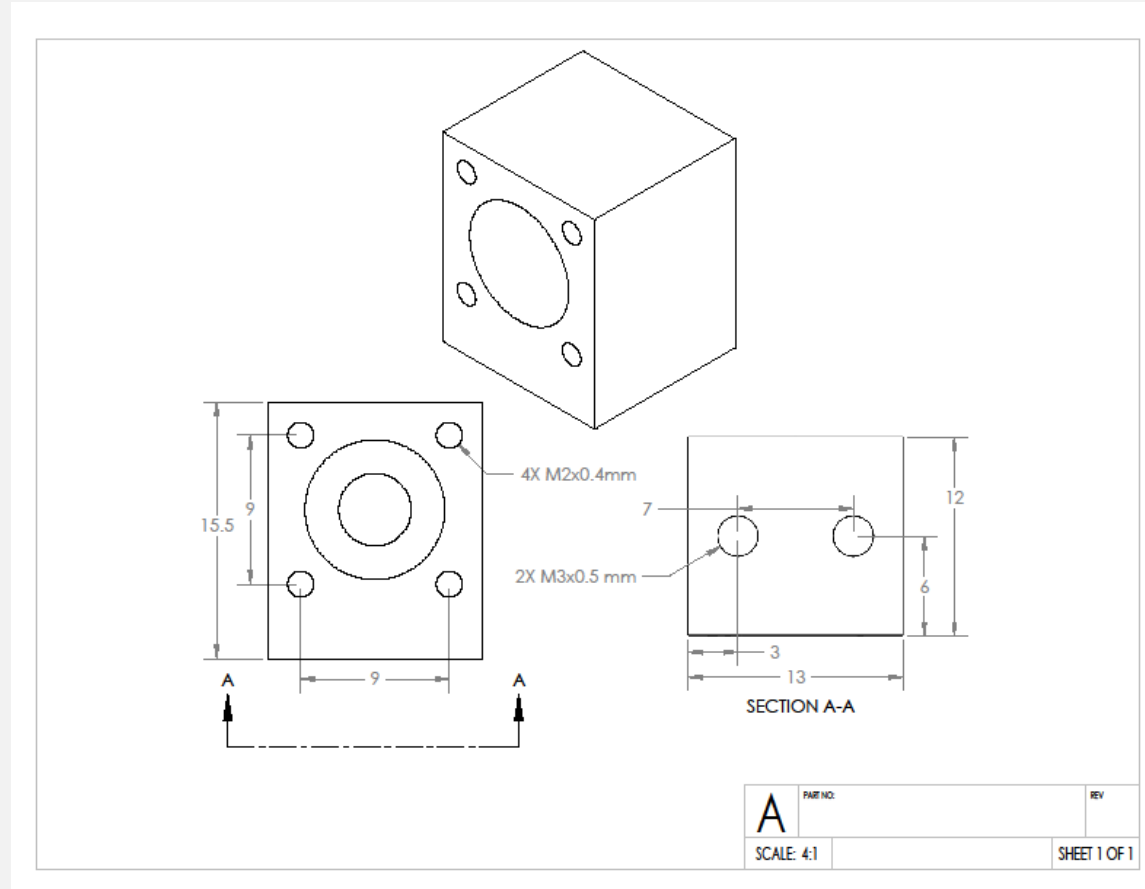


Spectral Output Power as a Function of Wavelength



Model Number: APS-827nm-260mW-STM-5.6mm-APC

Module Dimensions and Mounting Screws





Model Number: APS-827nm-260mW-STM-5.6mm-APC

Laser Safety Warnings

- **This OEM Micro-Module is meant for integration into other systems, and as such is not CDRH compliant.**
- **This Micro-Module is a Class IIIB laser product.**
- **Always use laser safety glasses with sufficient Neutral Density at the operating wavelength of 827 nm to protect your eyes.**
- **Skin exposure to this laser product should be avoided.**