



Model Number: APS-685nm-55mW-STM-5.6mm-APC

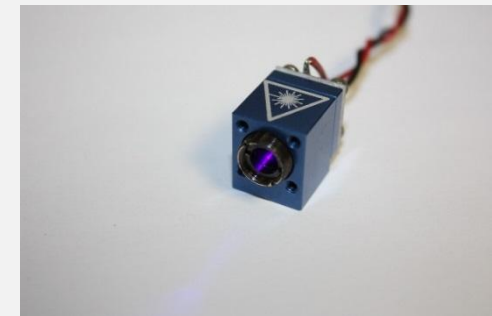
APS 55 mW 685 nm Laser Diode Module With Adjustable Aspheric Collimating Lens

Absolute Maximum Ratings at 25 °C

Item	Ratings	Unit
CW Output Power	55	mW
Laser Diode Reverse Voltage	2	V
Maximum Operating Current	90	mA
Operating Temperature	-10 to 70	°C
Storage Temperature	-40 to 85	°C

- **Simple Integrated Package**
- **Excellent Diode Heatsinking**
- **Small Footprint**
- **Simple Connection With Two Power Leads**
- **Adjustable Collimating Lens**
- **Lightweight, Rugged**
- **Precision Machined**

**Applications: Pointing, Illumination,
Sensing**



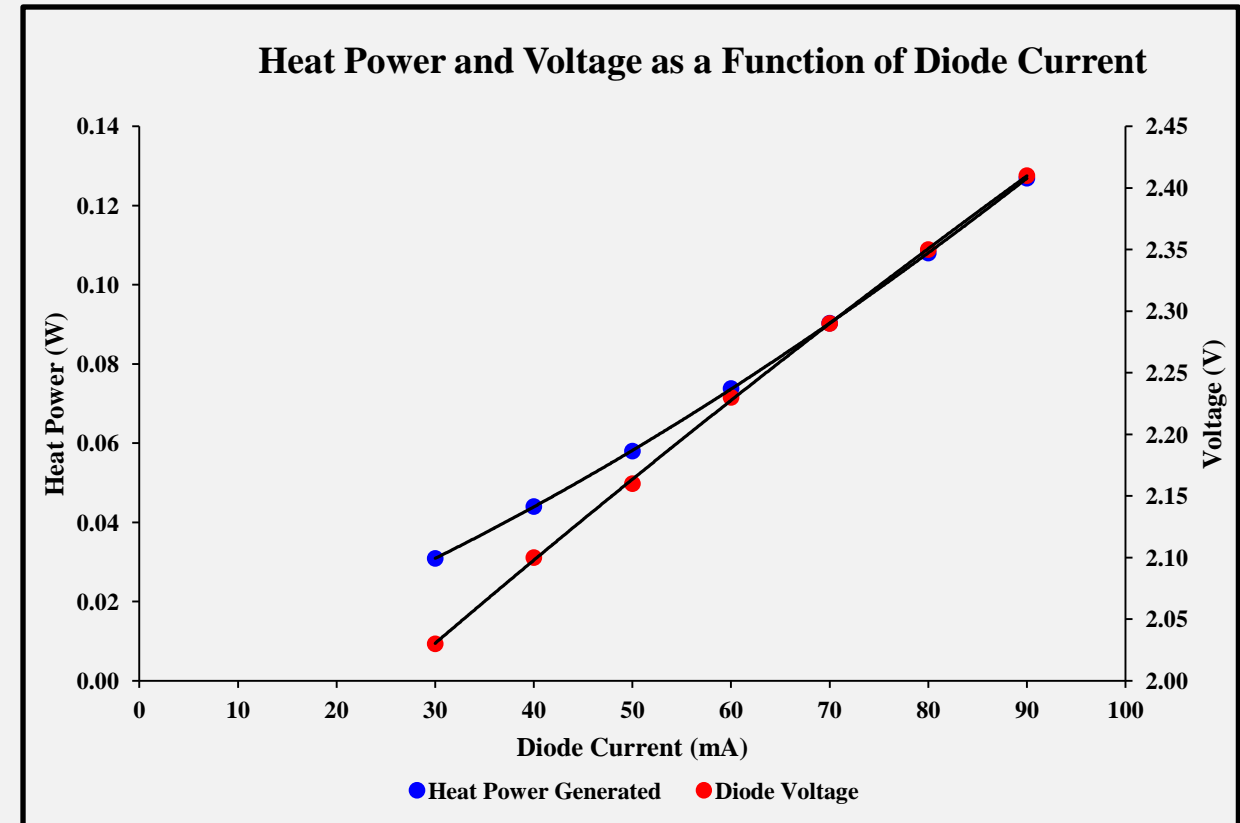
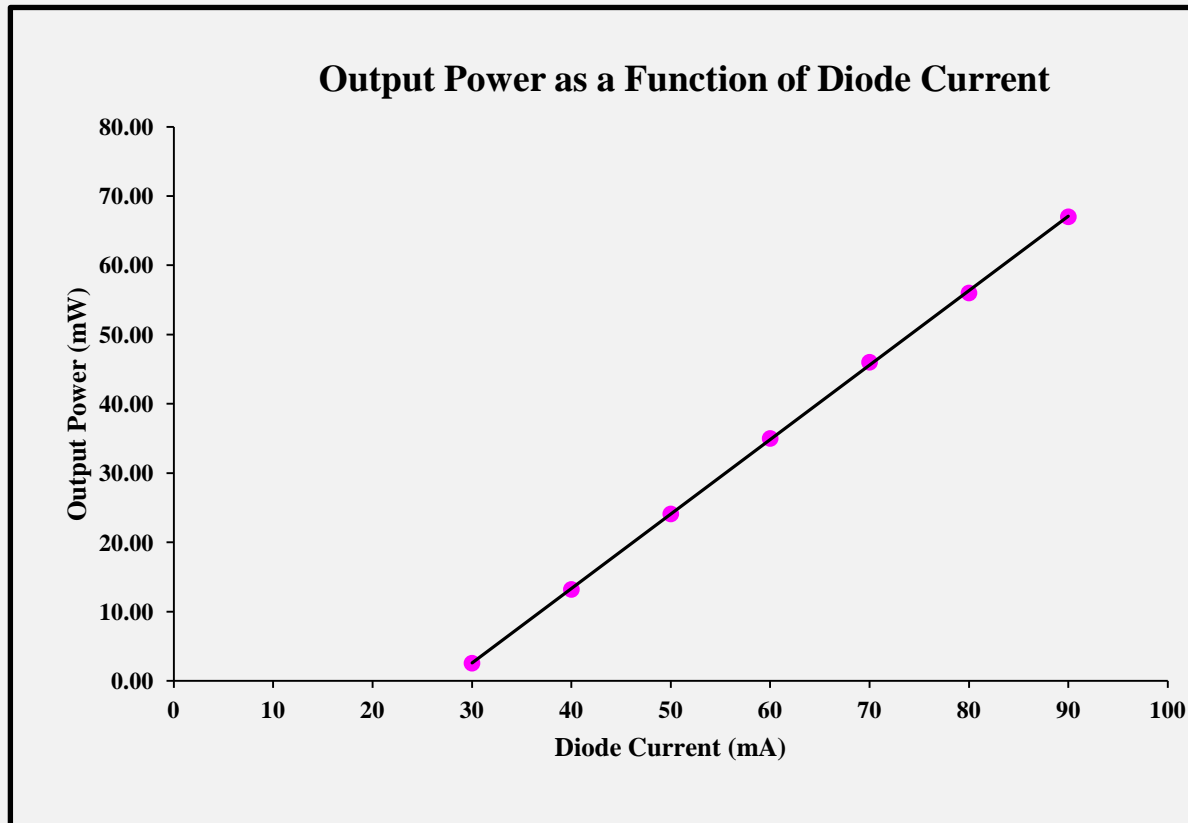


Model Number: APS-685nm-55mW-STM-5.6mm-APC
APS 55 mW 685 nm Laser Diode Module With Adjustable Aspheric Collimating Lens

Optical and Electrical Characteristics at 25 °C

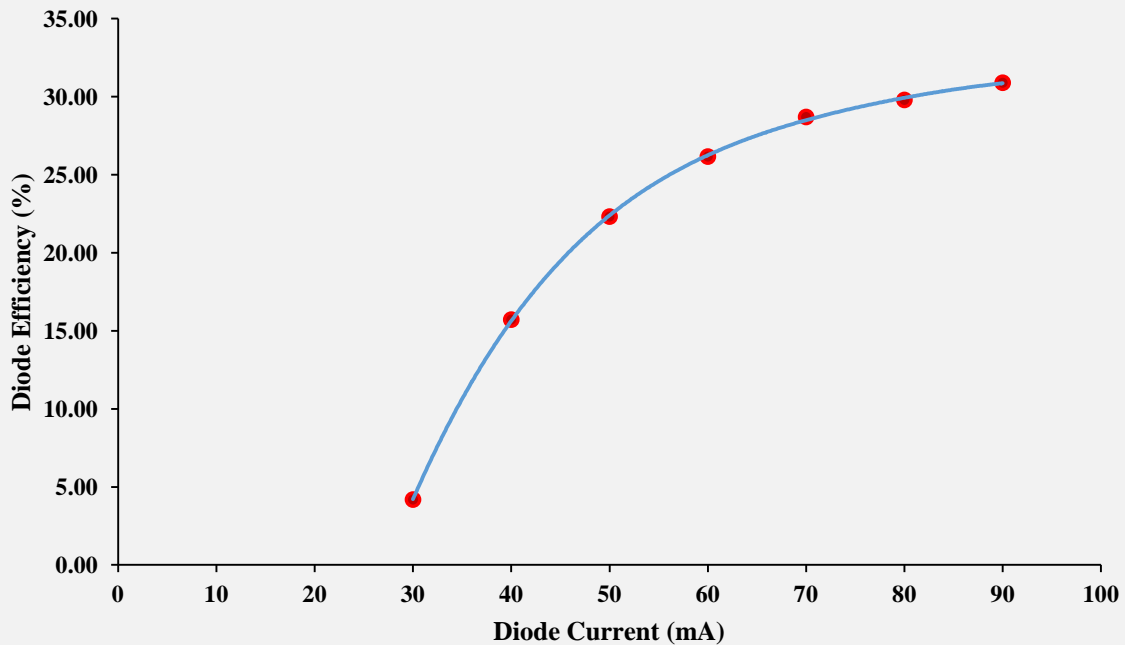
Parameter	Min	Typical	Max	Units	Test Condition
Threshold Current	-	30	60	mA	-
Operating Current	-	70	90	mA	$P_o = 50$ mW
Operating Voltage	-	2.3	3.0	V	$P_o = 50$ mW
Fast Axis Beam Divergence	32	-	45	°	$P_o = 50$ mW 1/e ² Full Angle
Slow Axis Beam Divergence	13	-	28	°	$P_o = 50$ mW 1/e ² Full Angle
Lasing Wavelength	675	685	695	nm	$P_o = 50$ mW
Transverse Mode	STM	STM	STM	-	All Currents
Polarization TE	-	-	-	-	Horizontal

Module Experimental Data

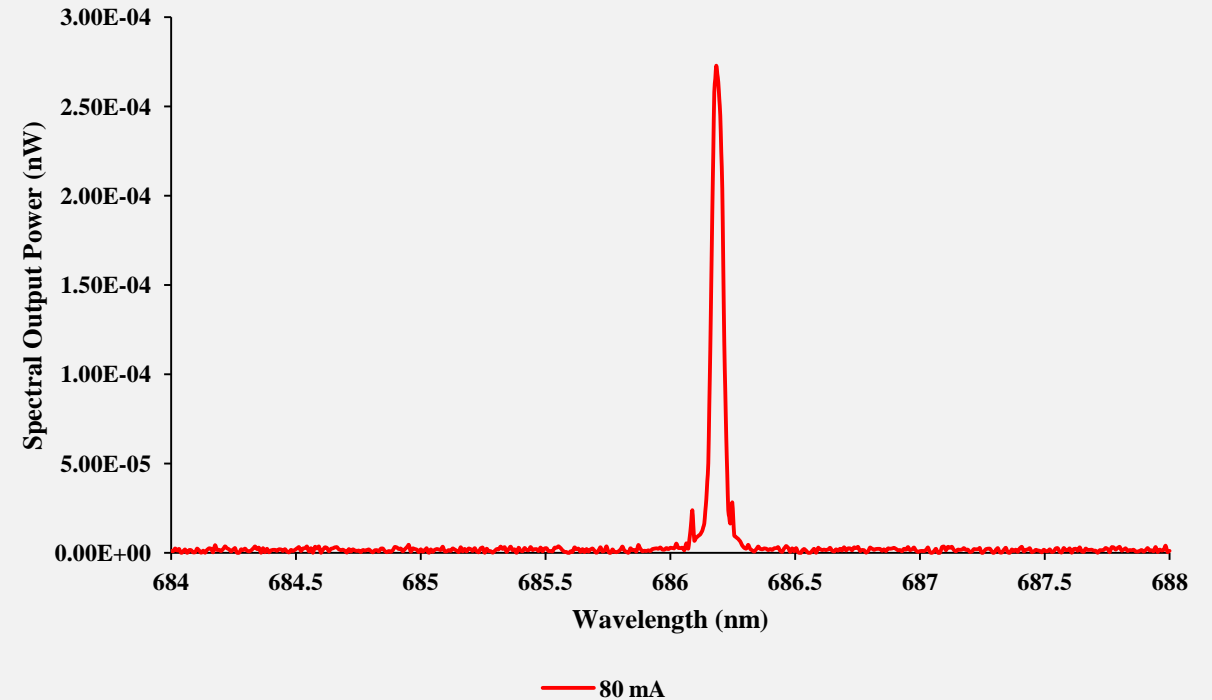


Module Experimental Data

Wallplug Efficiency as a Function of Diode Current

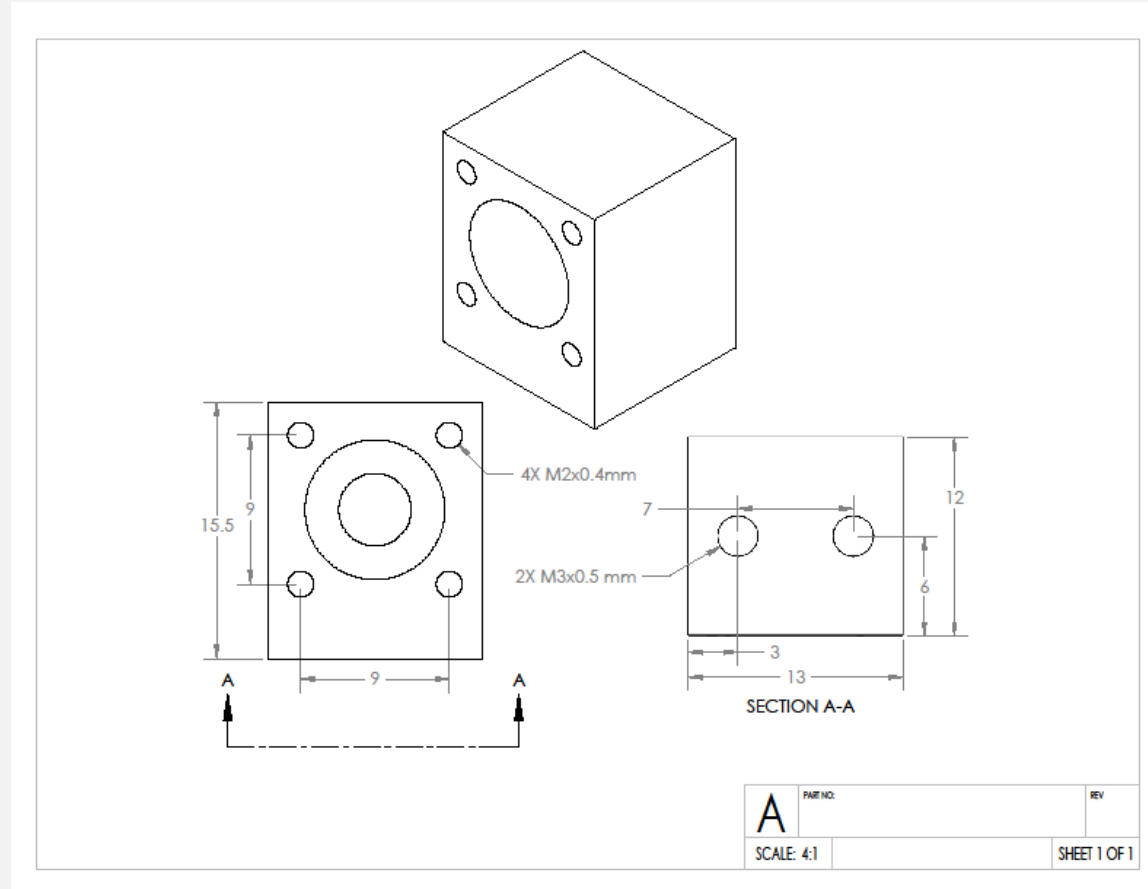


Spectral Output Power as a Function of Wavelength



Model Number: APS-685nm-55mW-STM-5.6mm-APC

Module Dimensions and Mounting Screws





Model Number: APS-685nm-55mW-STM-5.6mm-APC

Laser Safety Warnings

- **This OEM Micro-Module is meant for integration into other systems, and as such is not CDRH compliant.**
- **This Micro-Module is a Class 3B laser product.**
- **Always use laser safety glasses with sufficient Neutral Density at the operating wavelength of 685 nm to protect your eyes.**
- **Skin exposure to this laser product should be avoided.**